

tsf

that sinking feeling / high tide in venice

what

a high water monitoring service that gives you information about present and future conditions of the water level in a graphic way, with a touch of fun and poetry

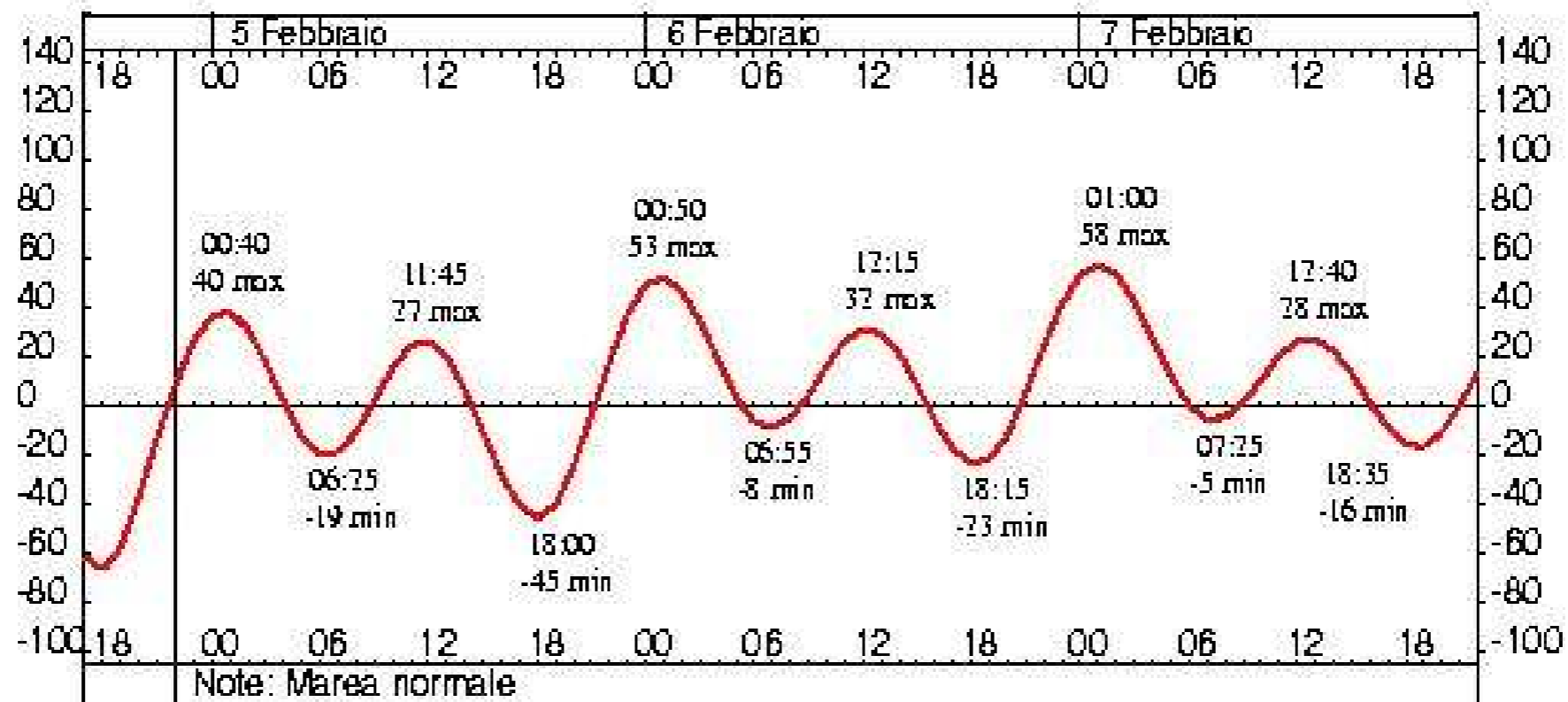
where

at home

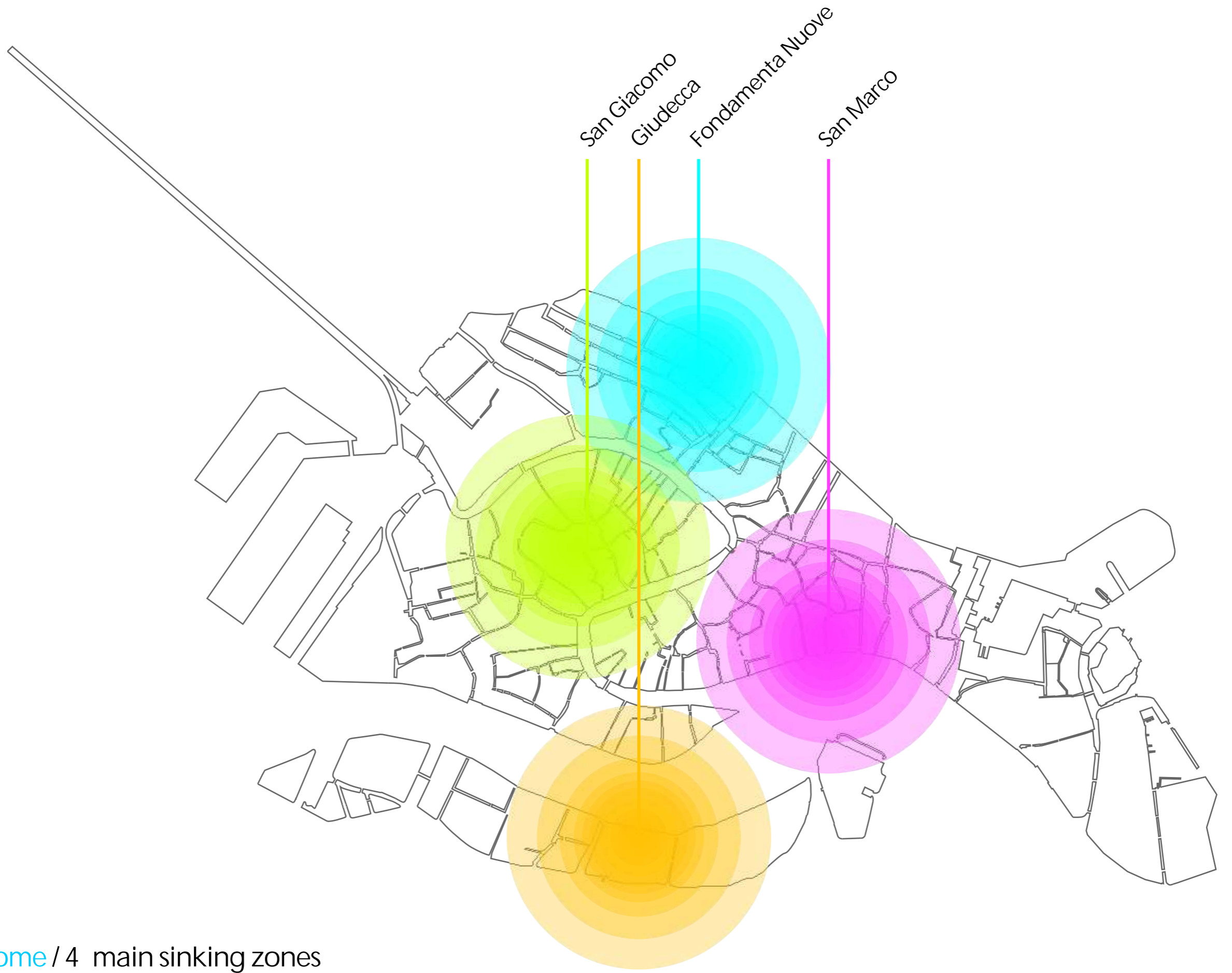
at key zones / train station, bus station, san marco...

how / at home

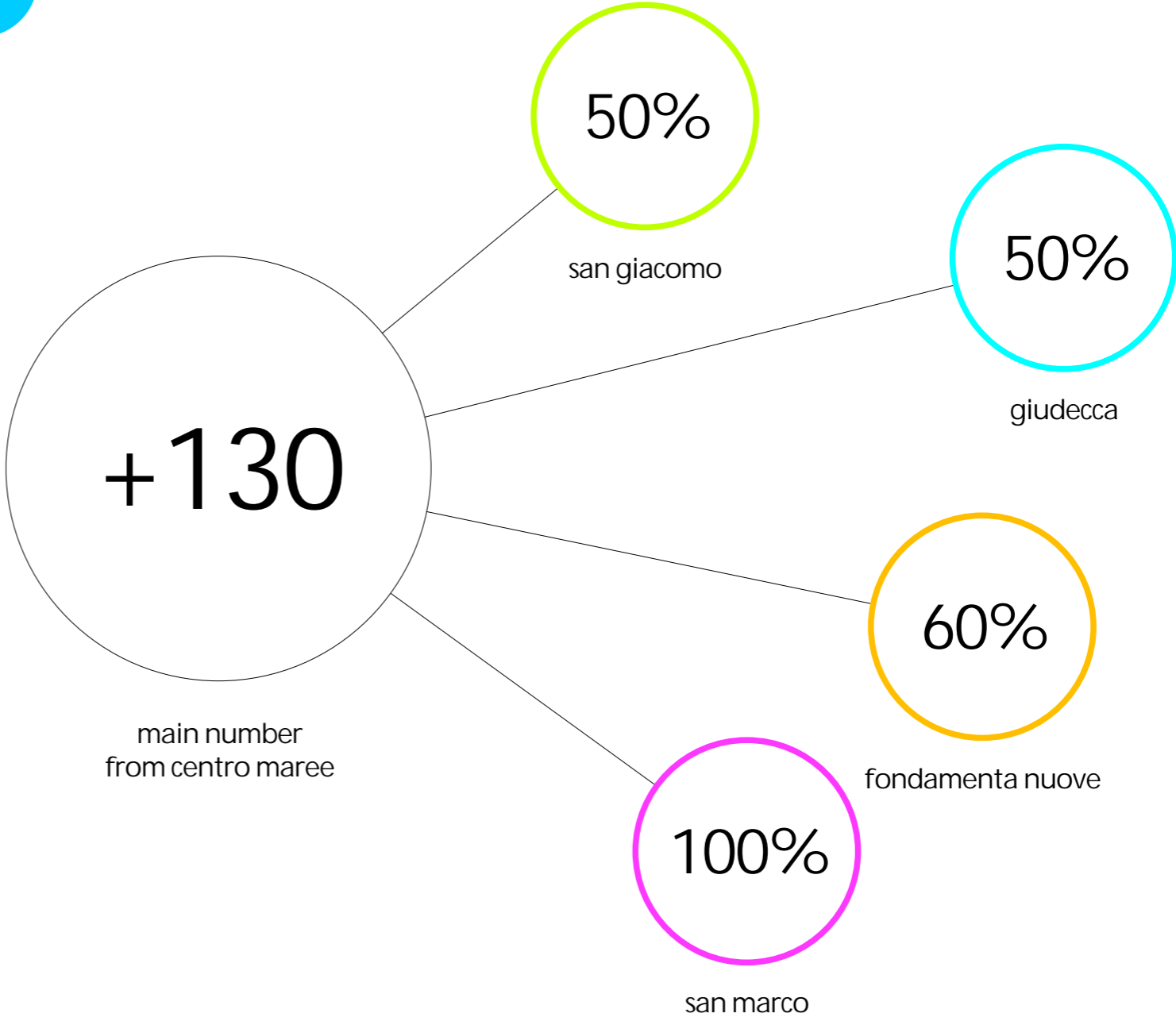
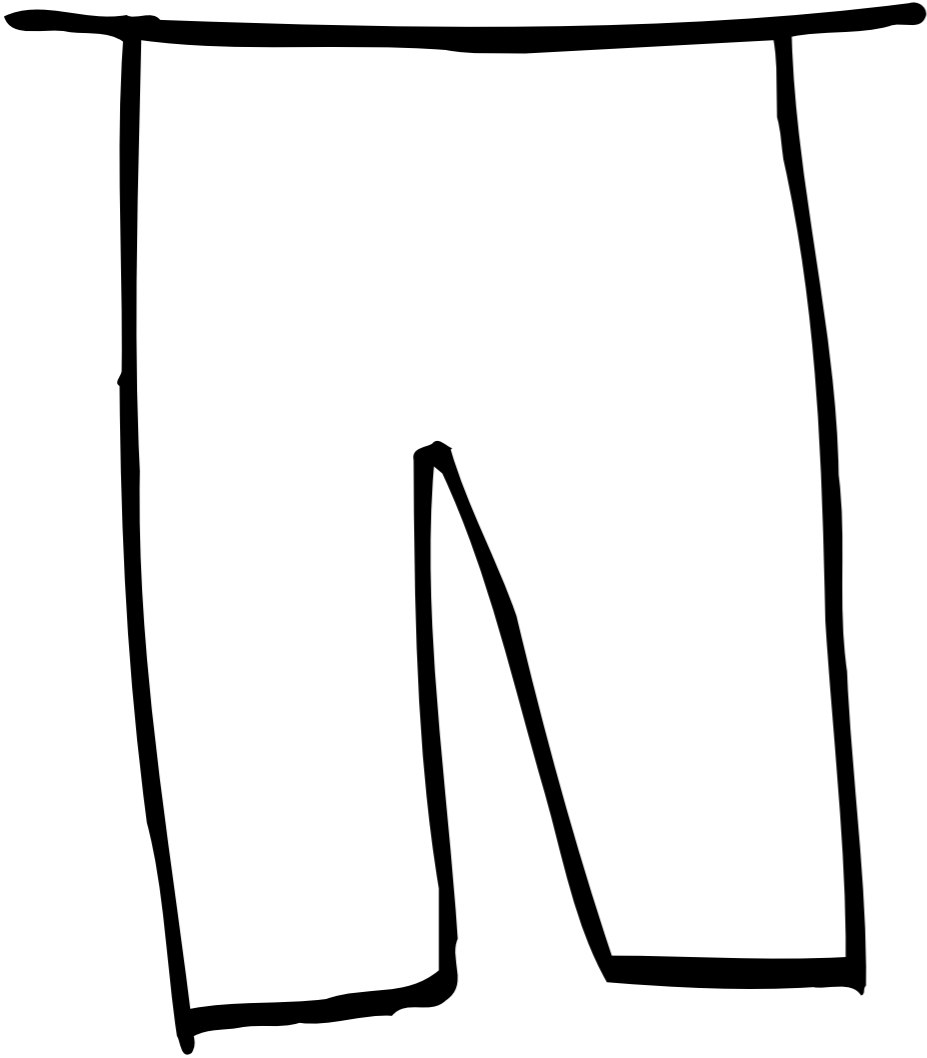
by an object that can project over the body and walls a graphic representation of the water conditions (current and future) of a place in venice. this object reads the data from the centro maree.



LIVELLI DI MAREA	PERCENTUALE DI SUPERFICIE ALLAGATA (%)
a + 100 cm	3,56
a + 110 cm	11,74
a + 120 cm	35,18
a + 130 cm	68,75
a + 140 cm	90,19



how will be my trousers
if I go to san marco now?





[home](#) / light for prototype





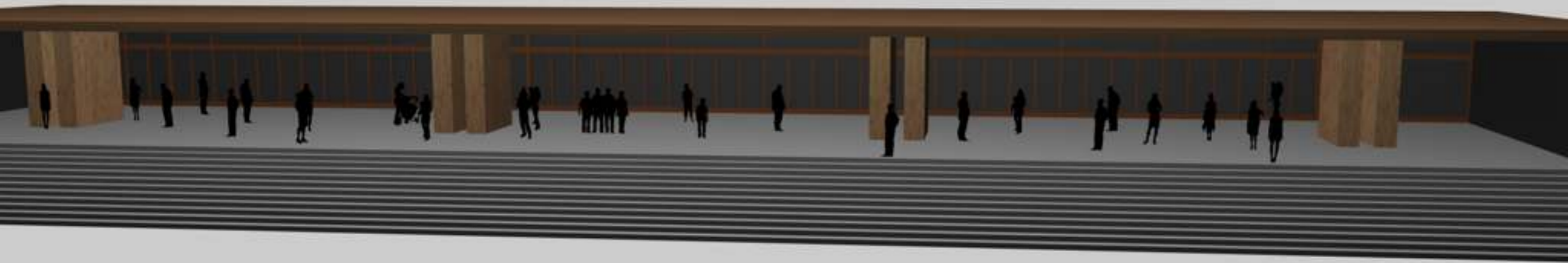


how / at key zones

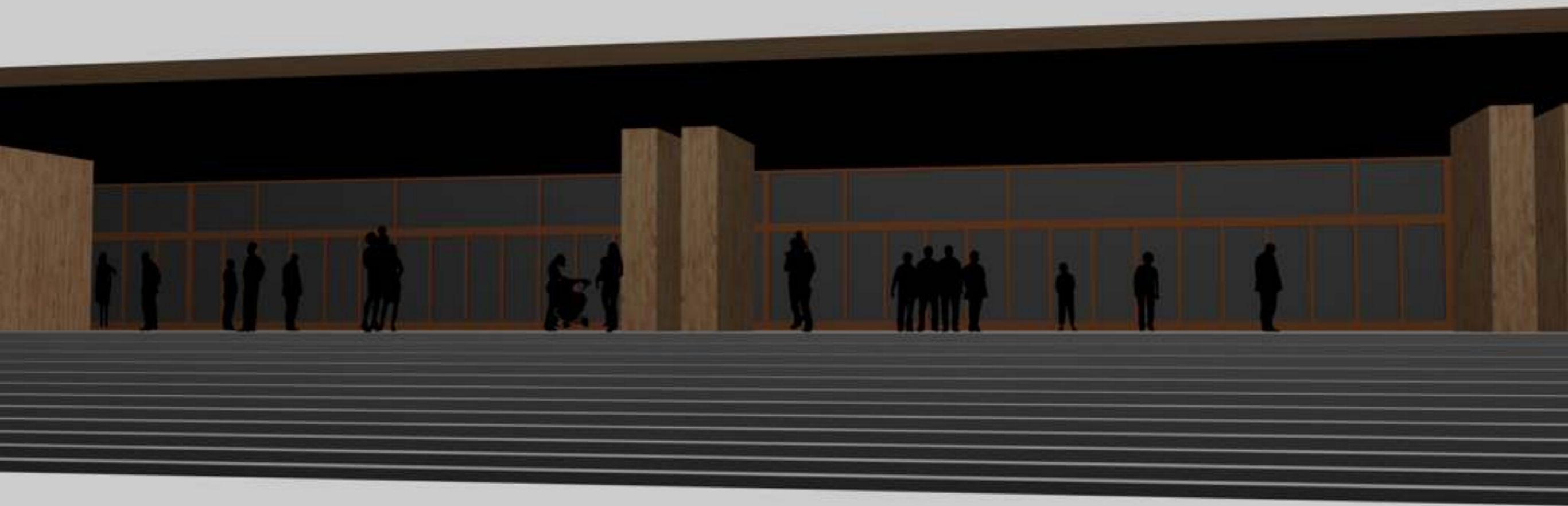
by a series of objects that project over the bodies of the people a graphic representation of the current and future water conditions.



key zones / train station



key zones / train station



key zones / train station



key zones / train station



key zones / installation technology



[key zones](#) / installation technology